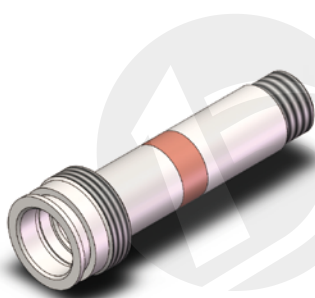


BYT16

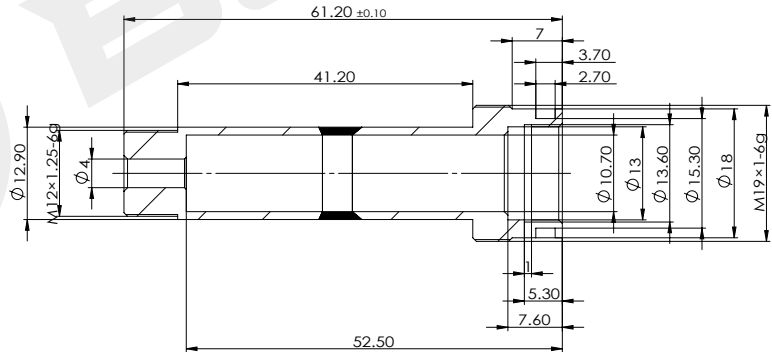
Magnetic guide tube for cartridge valve

- Push type, three-stage argon arc copper pile welding, threaded connection

BYT16-13-01M



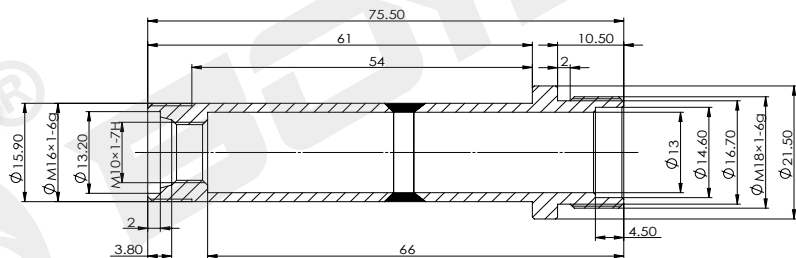
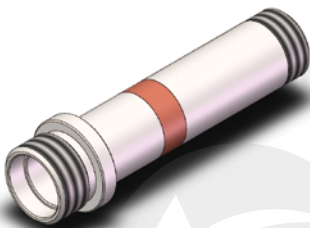
BYT16-13-01S



technical parameter

Working oil pressure	MPa	≤ 21	Hexagon size	mm	—
----------------------	-----	------	--------------	----	---

BYT16-16-01M



technical parameter

Working oil pressure	MPa	≤ 21	Hexagon size	mm	—
----------------------	-----	------	--------------	----	---